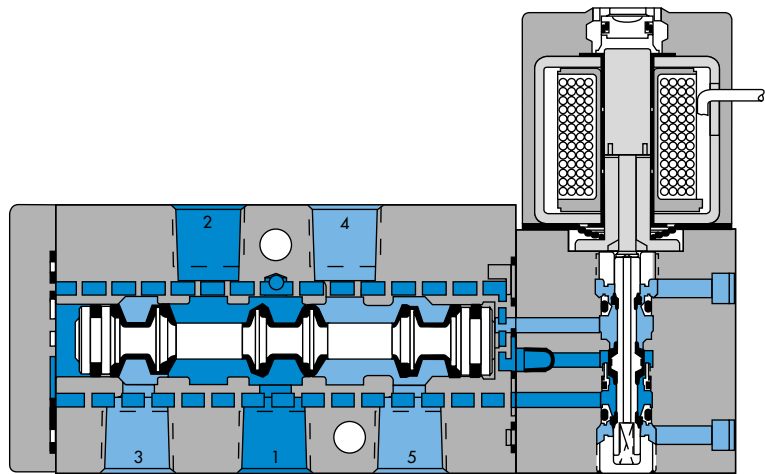


Individual mounting

inline	
--------	--

Circuit bar mounting

cylinder ports in base		cylinder ports in valve
---------------------------	--	----------------------------



Function	Port size	Flow (Max)	Individual mounting
<b>5/2 - 5/3</b>	<b>G1/8" - G1/4"</b>	<b>1000 NI/min</b>	inline

### OPERATIONAL BENEFITS

1. The 4-way pilot develops maximum shifting forces both ways.
2. Memory spring available.
3. Balanced spool, immune to variations of pressure, also provides high flow.
4. Short stroke with high flow.
5. Bonded spool with minimum friction, shifting in a glass-like finished bore.
6. Pilot with balanced poppet, high flow, short and consistent response times.
7. Wiping effect eliminates sticking.
8. Long service life.



### HOW TO ORDER

**Reset**

### SINGLE PRESSURE VALVES

Port size	Pilot air	5/2 Single operator	5/2 Double operator	5/3 Closed centre	5/3 Open centre	5/3 Pressure centre
<b>G1/8"</b>	Internal	411A-COA-DM-Dxxx-xxx	421A-COA-DM-Dxxx-xxx	451A-COA-DM-Dxxx-xxx	461A-COA-DM-Dxxx-xxx	471A-COA-DM-Dxxx-xxx
<b>G1/4"</b>	Internal	411A-DOA-DM-Dxxx-xxx	421A-DOA-DM-Dxxx-xxx	451A-DOA-DM-Dxxx-xxx	461A-DOA-DM-Dxxx-xxx	471A-DOA-DM-Dxxx-xxx
<b>G1/8"</b>	External	411A-COB-DM-Dxxx-xxx	421A-COB-DM-Dxxx-xxx	451A-COB-DM-Dxxx-xxx	461A-COB-DM-Dxxx-xxx	471A-COB-DM-Dxxx-xxx
<b>G1/4"</b>	External	411A-DOB-DM-Dxxx-xxx	421A-DOB-DM-Dxxx-xxx	451A-DOB-DM-Dxxx-xxx	461A-DOB-DM-Dxxx-xxx	471A-DOB-DM-Dxxx-xxx

### DUAL PRESSURE VALVES

Port size	Pilot air	5/2 Single operator	5/2 Double operator	5/3 Closed centre	5/3 Open centre	5/3 Pressure centre
<b>G1/8"</b>	Internal	431A-COA-DM-Dxxx-xxx	441A-COA-DM-Dxxx-xxx			481A-COA-DM-Dxxx-xxx
<b>G1/4"</b>	Internal	431A-DOA-DM-Dxxx-xxx	441A-DOA-DM-Dxxx-xxx			481A-DOA-DM-Dxxx-xxx
<b>G1/8"</b>	External	431A-COB-DM-Dxxx-xxx	441A-COB-DM-Dxxx-xxx	Not available	Not available	481A-COB-DM-Dxxx-xxx
<b>G1/4"</b>	External	431A-DOB-DM-Dxxx-xxx	441A-DOB-DM-Dxxx-xxx			481A-DOB-DM-Dxxx-xxx

### SOLENOID OPERATOR >

D **XX X - X XX**

XX	Voltage	X	Wire length	X	Manual operator	XX	Electrical connection
<b>JB</b>	220V~/50HZ	<b>A</b>	45 cm (Flying leads)	<b>1</b>	Non-locking	<b>KA</b>	Square connector
<b>JA</b>	110V~/50HZ	<b>J</b>	Connector	<b>2</b>	Locking	<b>KD</b>	Square connector with light
<b>JC</b>	24V~/50HZ					<b>JB</b>	Rectangular connector
<b>FB</b>	24V=/1,8W					<b>JD</b>	Rectangular connector with light
<b>DA</b>	24V=/5,4W					<b>BA</b>	Flying leads
<b>DF</b>	24V=/12,7W						

### OPTIONS

411A-COA-DM-Dxxx-xxx	431A-COA-DM-Dxxx-xxx
----------------------	----------------------

click for memory spring (replace by 4).

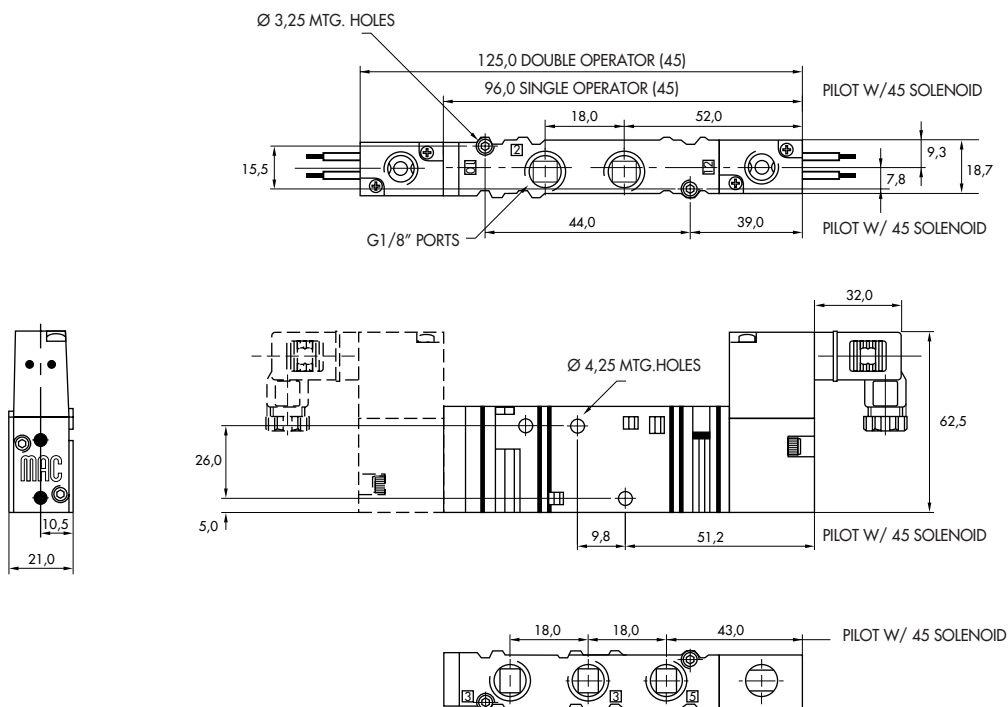
TECHNICAL  
D A T A

<b>Fluid :</b>	Compressed air, vacuum, inert gases
<b>Pressure range :</b>	Internal pilot : 1.4 to 8.5 bar External pilot : vacuum to 8.5 bar
<b>Pilot pressure :</b>	1.4 to 8.5 bar
<b>Lubrication :</b>	Not required, if used select a medium aniline point lubricant (between 80°C and 100°C)
<b>Filtration :</b>	40 µ
<b>Temperature range :</b>	-18°C to +50°C
<b>Orifice :</b>	6.2 mm
<b>Flow (at 6 bar, ΔP=1bar) :</b>	1000 NI/min (C <sub>v</sub> 1.0)
<b>Leak rate :</b>	50 cm <sup>3</sup> /min
<b>Coil :</b>	Epoxy encapsulated - class A wires - 100% ED (specify mod 0449)
<b>Voltage range :</b>	-15% to +10% of nominal voltage
<b>Protection :</b>	IP 65
<b>Power :</b>	~ Inrush : 10.9 VA    Holding : 7.7 VA = 1.8 to 12.7 W
<b>Response times :</b>	24 V= /5.4 W    Energize : 7.3 ms    De-energize : 5.3ms 50Hz/6 W    Energize : 8-12 ms    De-energize : 7-11 ms

Spare parts : • Pilot valve : DM-DXXX-XXX, including mounting screws 35043 and seal 16524.

Options : • NPTF threads.

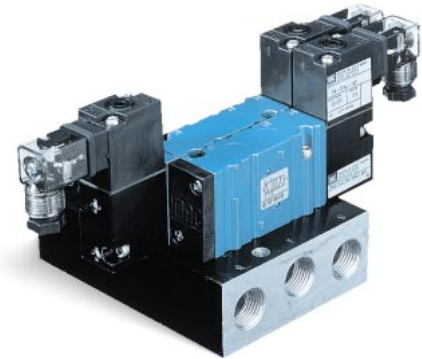
DIMENSIONS



Function	Port size	Flow (Max)	Circuit bar mounting
<b>5/2 - 5/3</b>	<b>G1/8" - G1/4"</b>	<b>800 NI/min</b>	<b>cylinder ports in base</b>

### OPERATIONAL BENEFITS

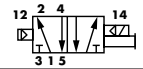
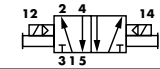
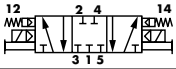
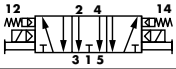
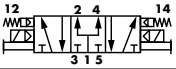
1. The 4-way pilot develops maximum shifting forces both ways.
2. Memory spring available.
3. Balanced spool, immune to variations of pressure, also provides high flow.
4. Short stroke with high flow.
5. Bonded spool with minimum friction, shifting in a glass-like finished bore.
6. Pilot with balanced poppet, high flow, short and consistent response times.
7. Wiping effect eliminates sticking.
8. Long service life.



**Reset**

### HOW TO ORDER

#### HOW TO ORDER VALVE FOR CIRCUIT BAR MOUNTING

Pilot air	5/2 Single operator	5/2 Double operator	5/3 Closed centre	5/3 Open centre	5/3 Pressure centre
					
Internal	413A-OOA-DM-Dxxx-xxx	423A-OOA-DM-Dxxx-xxx	453A-OOA-DM-Dxxx-xxx	463A-OOA-DM-Dxxx-xxx	473A-OOA-DM-Dxxx-xxx

#### SOLENOID OPERATOR ▶

D **XX X- X XX\***

XX Voltage	X Wire length	X Manual operator	XX Electrical connection
<b>JB</b> 220V~/50HZ	<b>A</b> 45 cm (Flying leads)	<b>1</b> Non-locking	<b>KA</b> Square connector
<b>JA</b> 110V~/50HZ	<b>J</b> Connector	<b>2</b> Locking	<b>KD</b> Square connector with light
<b>JC</b> 24V~/50HZ			<b>JB</b> Rectangular connector
<b>FB</b> 24V=/1,8W			<b>JD</b> Rectangular connector with light
<b>DA</b> 24V=/5,4W			<b>BA</b> Flying leads
<b>DF</b> 24V=/12,7W			

#### HOW TO ORDER CIRCUIT BAR (BOTTOM CYLINDER PORTS) \*\*

Port size	Pilot air	Spacing standard 19,5 mm		Spacing 26 mm (Rectangular connector)	
		w/o flow regulators	w/ flow regulators	w/o flow regulators	w/ flow regulators
<b>G1/8"</b>	Internal	CBM404A-00AAB-xx	CBM404A-00BAB-xx	CBM404A-02AAB-xx	CBM404A-02BAB-xx
<b>G1/4"</b>	Internal	CBM404A-00AAE-xx	CBM404A-00BAE-xx	CBM404A-02AAE-xx	CBM404A-02BAE-xx

\*\* Other options available. Consult factory.

Number of stations (03=3 stations)

### OPTIONS

413A-COA-DM-Dxxx-xxx

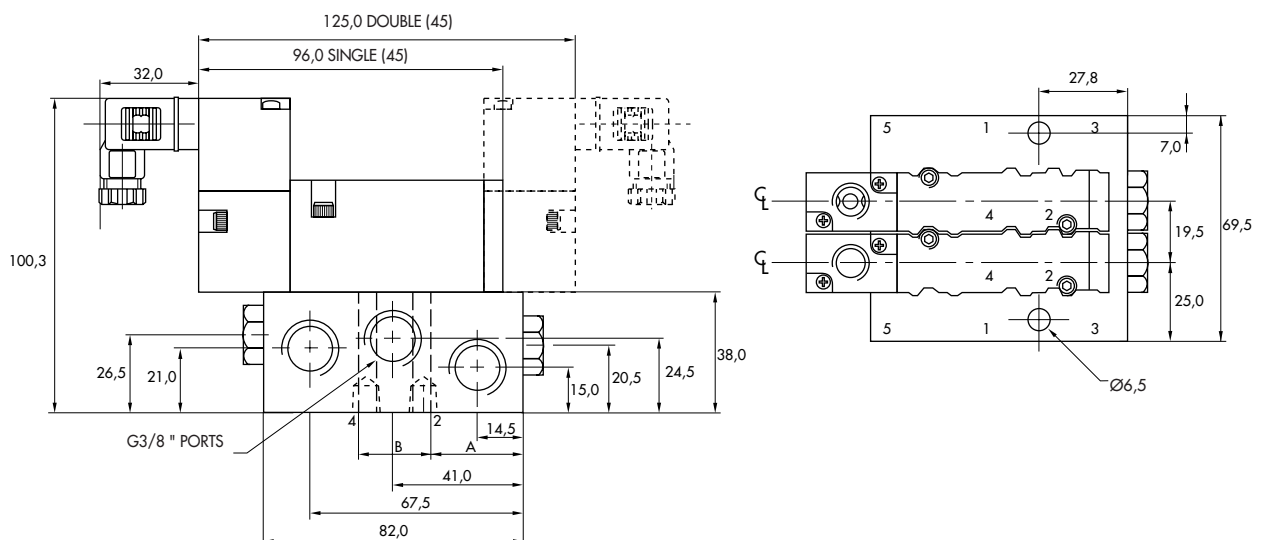
click for memory spring (replace by 6).

**TECHNICAL  
DATA**

<b>Fluid :</b>	Compressed air, vacuum, inert gases
<b>Pressure range :</b>	Internal pilot : 1.4 to 8.5 bar External pilot : vacuum to 8.5 bar
<b>Pilot pressure :</b>	1.4 to 8.5 bar
<b>Lubrication :</b>	Not required, if used select a medium aniline point lubricant (between 80°C and 100°C)
<b>Filtration :</b>	40 µ
<b>Temperature range :</b>	-18°C to +50°C
<b>Orifice :</b>	6.2 mm
<b>Flow (at 6 bar, ΔP=1bar) :</b>	800 Nl/min (C <sub>v</sub> 0.8)
<b>Leak rate :</b>	50 cm <sup>3</sup> /min
<b>Coil :</b>	Epoxy encapsulated - class A wires - 100% ED (specify mod 0449)
<b>Voltage range :</b>	-15% to +10% of nominal voltage
<b>Protection :</b>	IP 65
<b>Power :</b>	~ Inrush : 10.9 VA    Holding : 7.7 VA = 1.8 to 12.7 W
<b>Response times :</b>	24 V=/5.4 W    Energize : 7.3 ms    De-energize : 5.3ms 50Hz/6 W    Energize : 8-12 ms    De-energize : 7-11 ms

- Spare parts :      • Pilot valve : DM-DXXX-XXX, including mounting screws 35043 and seal 16524.
- Accessories :      • Blanking plate : M-04002. • Flow regulator : (x2) : N-04001. • Seal : 16525. • Mounting screw (x2) : 35043.
- Options :            • NPTF threads. • Isolation of inlet and/or exhaust. • Individual external pilot.

**DIMENSIONS**



Port size	A	B
<b>G1/8"</b>	31,5	19,0
<b>G1/4"</b>	32,0	20,0

Function	Port size	Flow (Max)	Circuit bar mounting
<b>5/2 - 5/3</b>	<b>G1/8" - G1/4"</b>	<b>800 NI/min</b>	<b>cylinder ports in base</b>

### OPERATIONAL BENEFITS

1. The 4-way pilot develops maximum shifting forces both ways.
2. Memory spring available.
3. Balanced spool, immune to variations of pressure, also provides high flow.
4. Short stroke with high flow.
5. Bonded spool with minimum friction, shifting in a glass-like finished bore.
6. Pilot with balanced poppet, high flow, short and consistent response times.
7. Wiping effect eliminates sticking.
8. Long service life.



**Reset**

### HOW TO ORDER

#### HOW TO ORDER VALVE FOR CIRCUIT BAR MOUNTING

Pilot air	5/2 Single operator	5/2 Double operator	5/3 Closed centre	5/3 Open centre	5/3 Pressure centre
Internal	413A-OOA-DM-Dxxx-xxx	423A-OOA-DM-Dxxx-xxx	453A-OOA-DM-Dxxx-xxx	463A-OOA-DM-Dxxx-xxx	473A-OOA-DM-Dxxx-xxx
Common External	413A-OOD-DM-Dxxx-xxx	423A-OOD-DM-Dxxx-xxx	453A-OOD-DM-Dxxx-xxx	463A-OOD-DM-Dxxx-xxx	473A-OOD-DM-Dxxx-xxx

#### SOLENOID OPERATOR >

D **XX X- X XX\***

XX Voltage	X Wire length	X Manual operator	XX Electrical connection
<b>JB</b> 220V~/50HZ	<b>A</b> 45 cm (Flying leads)	<b>1</b> Non-locking	<b>KA</b> Square connector
<b>JA</b> 110V~/50HZ	<b>J</b> Connector	<b>2</b> Locking	<b>KD</b> Square connector with light
<b>JC</b> 24V~/50HZ			<b>JB</b> Rectangular connector
<b>FB</b> 24V=/1,8W			<b>JD</b> Rectangular connector with light
<b>DA</b> 24V=/5,4W			<b>BA</b> Flying leads
<b>DF</b> 24V=/12,7W			

#### HOW TO ORDER CIRCUIT BAR \*\*

Port size	Pilot air	Spacing standard 19,5 mm	Spacing 26 mm (Rectangular connector)
<b>G1/8"</b>	Internal	CBM405A-00AAB-xx	CBM405A-02AAB-xx
	External comune	CBM405A-00BAB-xx	CBM405A-02BAB-xx
<b>G1/4"</b>	Internal	CBM405A-00AAE-xx	CBM405A-02AAE-xx
	External comune	CBM405A-00BAE-xx	CBM405A-02BAE-xx

\*\* Other options available. Consult factory.

Number of stations (03=3 stations)

### OPTIONS

413A-OOA-DM-Dxxx-xxx

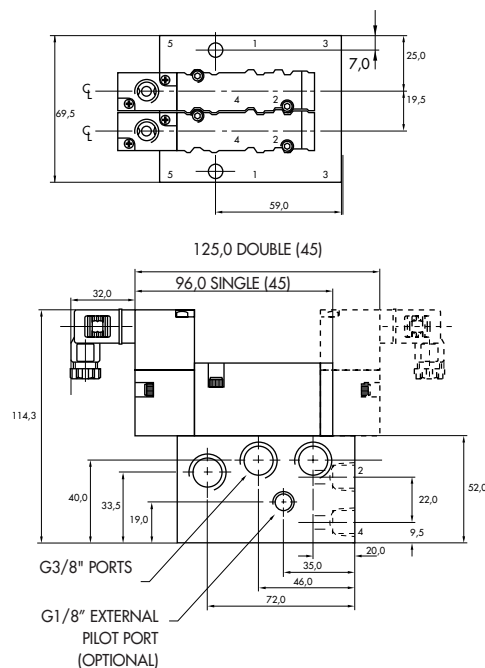
click for memory spring (replace by 6).

**TECHNICAL  
DATA**

<b>Fluid :</b>	Compressed air, vacuum, inert gases
<b>Pressure range :</b>	Internal pilot : 1.4 to 8.5 bar External pilot : vacuum to 8.5 bar
<b>Pilot pressure :</b>	1.4 to 8.5 bar
<b>Lubrication :</b>	Not required, if used select a medium aniline point lubricant (between 80°C and 100°C)
<b>Filtration :</b>	40 µ
<b>Temperature range :</b>	-18°C to +50°C
<b>Orifice :</b>	6.2 mm
<b>Flow (at 6 bar, ΔP=1bar) :</b>	800 Nl/min (C <sub>v</sub> 0.8)
<b>Leak rate :</b>	50 cm <sup>3</sup> /min
<b>Coil :</b>	Epoxy encapsulated - class A wires - 100% ED (specify mod 0449)
<b>Voltage range :</b>	-1.5% to +10% of nominal voltage
<b>Protection :</b>	IP 65
<b>Power :</b>	~ Inrush : 10.9 VA    Holding : 7.7 VA = 1.8 to 12.7 W
<b>Response times :</b>	24 V=/5.4 W    Energize : 7.3 ms    De-energize : 5.3ms 50Hz/6 W    Energize : 8-12 ms    De-energize : 7-11 ms

- Spare parts :      • Pilot valve : DM-DXXX-XXX, including mounting screws 35043 and seal 16524.
- Accessories :      • Blanking plate : M-04002. • Seal : 16525. • Mounting screw (x2) : 35043.
- Options :            • NPTF threads. • Isolation of inlet and/or exhaust. • Individual external pilot.

**DIMENSIONS**



Function	Port size	Flow (Max)	Circuit bar mounting
<b>5/2 - 5/3</b>	<b>G1/8" - G1/4"</b>	<b>1000 NI/min</b>	cylinder ports in valve

### OPERATIONAL BENEFITS

1. The 4-way pilot develops maximum shifting forces both ways.
2. Memory spring available.
3. Balanced spool, immune to variations of pressure, also provides high flow.
4. Short stroke with high flow.
5. Bonded spool with minimum friction, shifting in a glass-like finished bore.
6. Pilot with balanced poppet, high flow, short and consistent response times.
7. Wiping effect eliminates sticking.
8. Long service life.



### HOW TO ORDER

Reset

### HOW TO ORDER VALVE FOR CIRCUIT BAR MOUNTING

Port size	Pilot air	5/2		5/3		5/3	
		Single operator	Double operator	Closed centre	Open centre	Pressure centre	
<b>G1/8"</b>	Internal						
<b>G1/4"</b>	Internal	411A-COA-DM-Dxxx-xxx	421A-COA-DM-Dxxx-xxx	451A-COA-DM-Dxxx-xxx	461A-COA-DM-Dxxx-xxx	471A-COA-DM-Dxxx-xxx	
<b>G1/4"</b>	Common	411A-DOA-DM-Dxxx-xxx	421A-DOA-DM-Dxxx-xxx	451A-DOA-DM-Dxxx-xxx	461A-DOA-DM-Dxxx-xxx	471A-DOA-DM-Dxxx-xxx	
<b>G1/8"</b>	Common	411A-COD-DM-Dxxx-xxx	421A-COD-DM-Dxxx-xxx	451A-COD-DM-Dxxx-xxx	461A-COD-DM-Dxxx-xxx	471A-COD-DM-Dxxx-xxx	
<b>G1/4"</b>	External	411A-DOD-DM-Dxxx-xxx	421A-DOD-DM-Dxxx-xxx	451A-DOD-DM-Dxxx-xxx	461A-DOD-DM-Dxxx-xxx	471A-DOD-DM-Dxxx-xxx	

### SOLENOID OPERATOR >

D **XX X- X XX**

XX	Voltage	X	Wire length	X	Manual operator	XX	Electrical connection
<b>JB</b>	220V~/50HZ	<b>A</b>	45 cm (Flying leads)	<b>1</b>	Non-locking	<b>KA</b>	Square connector
<b>JA</b>	110V~/50HZ	<b>J</b>	Connector	<b>2</b>	Locking	<b>KD</b>	Square connector with light
<b>JC</b>	24V~/50HZ					<b>JB</b>	Rectangular connector
<b>FB</b>	24V=/1,8W					<b>JD</b>	Rectangular connector with light
<b>DA</b>	24V=/5,4W					<b>BA</b>	Flying leads
<b>DF</b>	24V=/12,7W						

### HOW TO ORDER CIRCUIT BAR \*\*

Port size	Pilot air	Spacing standard 19,5 mm		Spacing 26 mm (Rectangular connector)	
		w/o flow regulators	w/ flow regulators	w/o flow regulators	w/ flow regulators
<b>G3/8"</b>	Internal	CBM403A-00AAB-xx	CBM403A-00BAB-xx	CBM403A-02AAB-xx	CBM403A-02BAB-xx
	External comune	CBM403A-00CAB-xx	CBM403A-00DAB-xx	CBM403A-02CAB-xx	CBM403A-02DAB-xx

\*\* Other options available. Consult factory.

Number of stations (03=3 stations)

### OPTIONS

411A-COA-DM-Dxxx-xxx

click for memory spring (replace by 6).



**TECHNICAL  
D A T A**

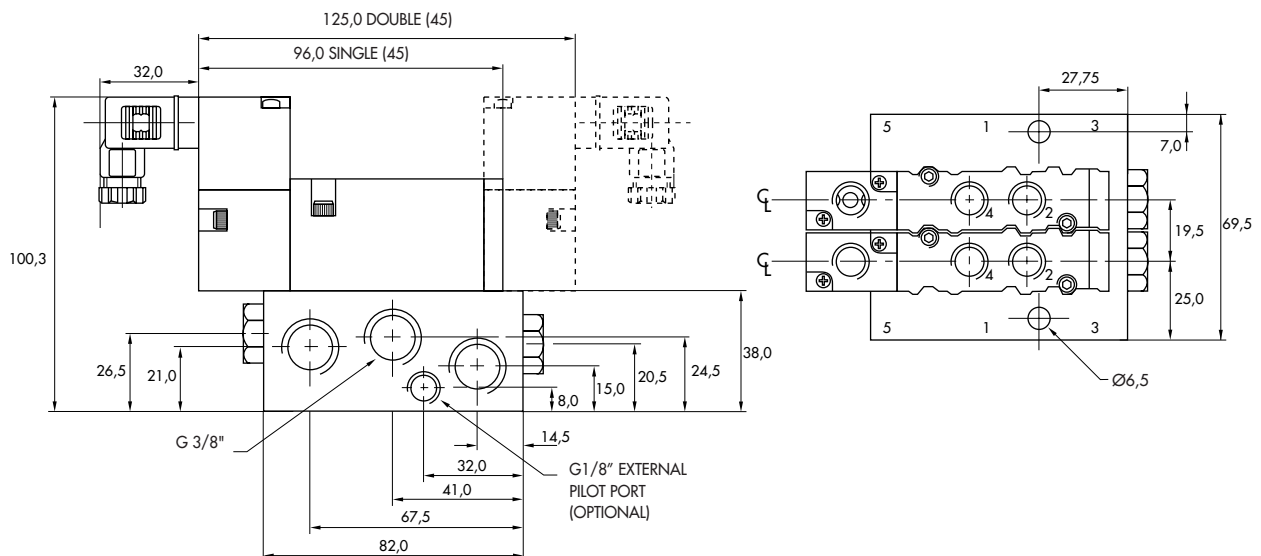
<b>Fluid :</b>	Compressed air, vacuum, inert gases		
<b>Pressure range :</b>	Internal pilot : 1.4 to 8.5 bar External pilot : vacuum to 8.5 bar		
<b>Pilot pressure :</b>	1.4 to 8.5 bar		
<b>Lubrication :</b>	Not required, if used select a medium aniline point lubricant (between 80°C and 100°C)		
<b>Filtration :</b>	40 µ		
<b>Temperature range :</b>	-18°C to +50°C		
<b>Orifice :</b>	6.2 mm		
<b>Flow (at 6 bar, ΔP=1bar) :</b>	1000 NI/min (C <sub>v</sub> 1.0)		
<b>Leak rate :</b>	50 cm <sup>3</sup> /min		
<b>Coil :</b>	Epoxy encapsulated - class A wires - 100% ED (specify mod 0449)		
<b>Voltage range :</b>	-15% to +10% of nominal voltage		
<b>Protection :</b>	IP 65		
<b>Power :</b>	~ Inrush : 10.9 VA	Holding : 7.7 VA	
	= 1.8 to 12.7 W		
<b>Response times :</b>	24 V=/5.4 W	Energize : 7.3 ms	De-energize : 5.3ms
	50Hz/6 W	Energize : 8-12 ms	De-energize : 7-11 ms

Spare parts : • Pilot valve : DM-DXXX-XXX, including mounting screws 35043 and seal 16524.

Accessories : • Blanking plate : M-04001. • Flow regulator (x2) : N-04001. • Seal : 17013-01 (x2), 17015-01(x1).  
• Mounting screw (x2) : 35043.

Options : • NPTF threads. • Isolation of inlet and/or exhaust. • Individual external pilot.

**DIMENSIONS**





---

**Codification table for voltages / Wire length / Manual operator / Electrical connection**

---

VALVE CODE >

**DM- DXX X - X XX**  
**1 2 3 4**

**OPTIONS AVAILABLE FOR**

- pilot operated valves 400 & 52 Series

---

**1. VOLTAGE**

<b>- D XX X - X XX</b>	<b>VOLTAGE</b>
<b>DA</b>	24 V=/5,4 W
<b>DB</b>	12 V=/5,4 W
<b>DC</b>	12 V=/7,5 W
<b>DD</b>	24 V=/7,3 W
<b>DE</b>	12 V=/12,7 W
<b>DF</b>	24 V=/12,7 W
<b>DK</b>	110 V=/4,7 W
<b>DJ</b>	28 V=/5,2 W
<b>DL</b>	64 V=/6 W
<b>DM</b>	36 V=/5,3 W
<b>DN</b>	6 V=/6 W
<b>DR</b>	90 V=/6,6 W
<b>DS</b>	110 V=/7,3 W
<b>DT</b>	75 V=/5,6 W
<b>DP</b>	48 V=/5,8 W
<b>FA</b>	12 V=/1,8 W
<b>FB</b>	24 V=/1,8 W
<b>FE</b>	12 V=/2,4 W
<b>FF</b>	24 V=/2,4 W
<b>JA</b>	120V~/60 Hz, 110V~/50 Hz (2,9 W)
<b>JB</b>	240 V~/60 Hz, 220V~/50 Hz (2,9 W)
<b>JC</b>	24 V~/60 Hz, 24V~/50 Hz (3,7 W)
<b>JD</b>	100 V~/60 Hz, 100V~/50 Hz, 110V~/60 Hz (3,9 W)

**2. WIRE LENGTH**

<b>- D XX X - X XX</b>	<b>WIRE LENGTH</b>
<b>A</b>	45 cm - 18"
<b>B</b>	60 cm - 24"
<b>C</b>	90 cm - 36"
<b>D</b>	120 cm - 48"
<b>E</b>	180 cm - 72"
<b>F</b>	240 cm - 96"
<b>J</b>	For external plug-in connector

### 3. MANUAL OPERATOR

**- D XX X - X XX    MANUAL OPERATOR**

<b>0</b>	No operator
<b>1</b>	Non-locking recessed
<b>2</b>	Locking recessed
<b>3</b>	Non-locking extended
<b>4</b>	Locking extended

### 4. ELECTRICAL CONNECTION

**- D XX X - X XX    ELECTRICAL CONNECTION**

<b>BA</b>	Flying leads
<b>BK</b>	BA with protection diode
<b>BL</b>	BA with protection varistor
<b>CA</b>	1/2" NPS conduit
<b>JB</b>	Rectangular connector
<b>JD</b>	Rectangular connector with light
<b>JM</b>	Rectangular connector, male only
<b>KA</b>	Square connector
<b>KB</b>	Square connector with protection diode
<b>KC</b>	Square connector with protection varistor
<b>KD</b>	Square connector with light
<b>KE</b>	Square connector with light and protection diode
<b>KF</b>	Square connector with light and protection varistor
<b>KJ</b>	Square connector (male only)
<b>KK</b>	Square connector with protection diode (male only)
<b>KL</b>	Square connector with protection varistor (male only)
<b>TA</b>	Dual tabs
<b>TB</b>	TA with protection diode
<b>TD</b>	TA with light
<b>TE</b>	TA with light and protection diode
<b>TJ</b>	Dual tabs (male only)
<b>TK</b>	TJ with protection diode
<b>TM</b>	TJ with light
<b>TN</b>	TJ with light and protection diode